



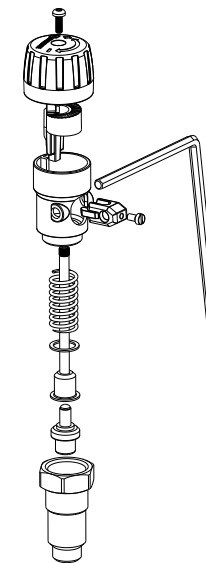
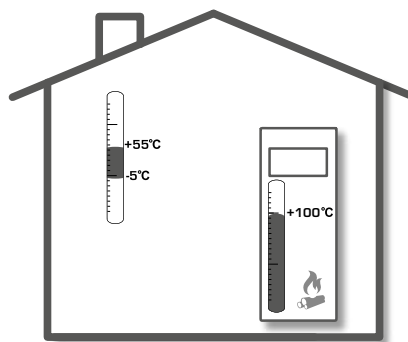
SERIES ATA200

ESBE
NO.1 IN HYDRONIC SYSTEM CONTROL

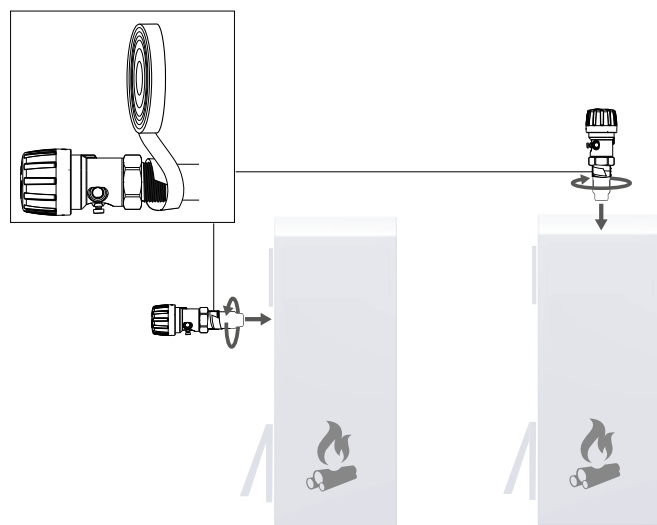


Series ATA212
Series ATA222

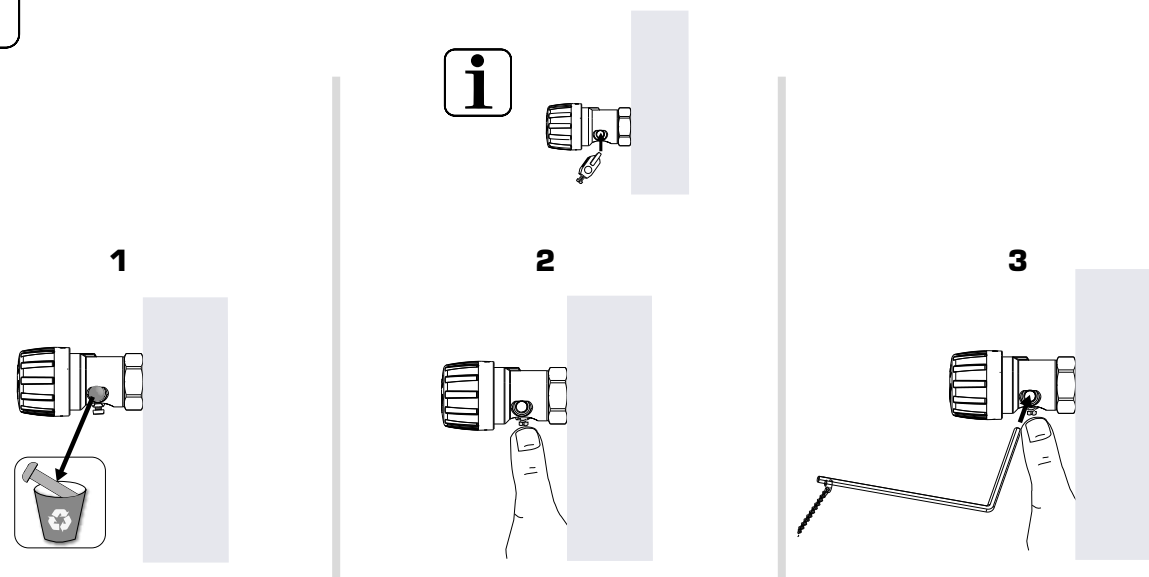
PED 2014/68/EU, article 4.3



1

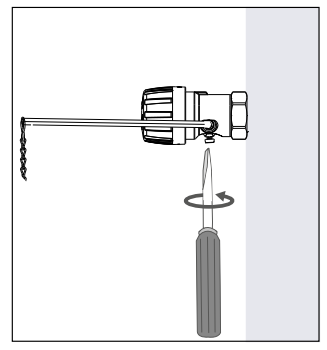
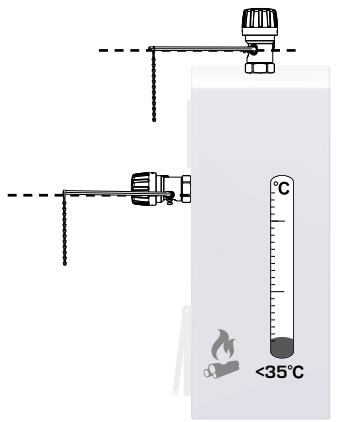
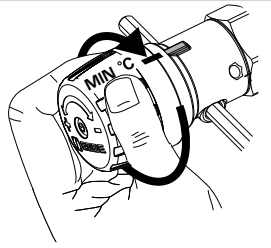


2



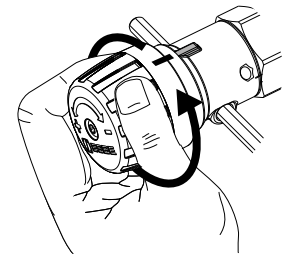
3

ATA200: Min 35°C/Min 60°C

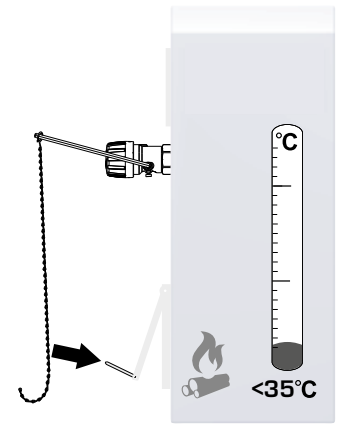


4

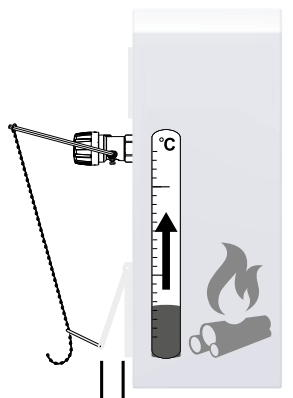
°C MAX ?



5

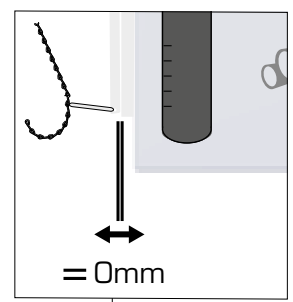
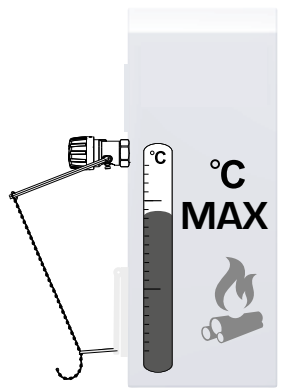


6



⚠ ≠ 0mm

7



i

≠ 0mm

